

**jeremy**  
**shaw** LEED®AP

P L A N N I N G

U R B A N   D E S I G N

T R A N S P O R T A T I O N

[jshaw@alum.mit.edu](mailto:jshaw@alum.mit.edu)

415 - 860 - 7429

[jeremyashaw.com](http://jeremyashaw.com)

## education

### **MASSACHUSETTS INSTITUTE OF TECHNOLOGY | MASTER OF CITY PLANNING | 2007**

Specialized in *City Design & Development*. Thesis on *Arterial Street Design* in California. Coursework included: Site & Landscape Planning, Ecological Strategies for Disturbed Sites, Kiev Urban Design Studio, Land Use Law & Politics, Brownfields, Negotiation and Dispute Resolution in the Public Sector.

### **UC BERKELEY | BACHELOR OF GEOGRAPHY, MINOR IN CITY & REGIONAL PLANNING | 2000**

## experience

### **SAN FRANCISCO PLANNING DEPARTMENT | PLANNER III | San Francisco, CA | April 2015 - Present**

Conceptualizing and implementing diverse public processes. Managing consultants, inter-agency staff for 17-acre master plan. Managing public-private strategy to develop multi-modal transit facility. Secured funding, managed consultant, and co-wrote neighborhood Transportation Demand Management strategy. Analyzing land-use benefits of high-speed rail.

### **SAN FRANCISCO PLANNING DEPARTMENT | PLANNER II | San Francisco, CA | July 2013 - April 2015**

Managed consultants and technical advisory committee to study multi-modal transit needs, evaluate station alternatives, and select preferred station location. Secured funding, managed consultants and created public space stewardship guide. Developed capital plan for eastern neighborhoods of SF. Co-wrote design guidelines and planning code for 20-acre site. Developed surface-mounted facility design criteria and legislation.

### **MISSION COMMUNITY MARKET | EXECUTIVE DIRECTOR | San Francisco, CA | March 2010 - July 2013**

Secured \$2.1M from various City funds to design and construct a shared street. Managed community design and bilingual outreach process. Managed non-profit organization, weekly market, board of directors, and community partnerships. Raised funds for annual operating budget of \$200,000.

### **EISEN|LETUNIC | ASSOCIATE PLANNER | San Francisco, CA | December 2011 - July 2013**

Evaluated MTC Climate Initiatives, including TDM programs, demand-based parking, dynamic ride-sharing, and mobile bike repair. Co-wrote BART Bicycle Access Plan, recommended system-wide bicycle strategies, designed bike parking scenarios for 15 stations.

### **WEST 8 | URBAN DESIGNER/PLANNER | Rotterdam, NL | October 2008 - March 2009**

Designed 800-acre master plan, street sections, and networks of streets, bike paths and open space in Almere, NL. Planned 30-year growth plan, including urban design, housing, landscape, and economic strategies for Samarra, Iraq.

### **HOK PLANNING GROUP | SENIOR PLANNER | San Francisco, CA | July 2007 - July 2008**

Managed projects and subconsultants. Designed State office campus and parking concepts, evaluated construction costs, and strategized growth for the State of California. Managed campus sustainability plan. Designed BART station-area redevelopment and parking scenarios.

### **NELSON NYGAARD CONSULTING ASSOCIATES | CONTRACTOR | CA | May - July 2007**

Proposed parking construction standards, structure designs, joint development and operations scenarios for BART. Analyzed BART parking policy to facilitate public-private partnerships. Managed shared street design project in L.A.

### **CALTHORPE ASSOCIATES | SENIOR PLANNER | Berkeley, CA | April 2001 - July 2004**

Designed and facilitated workshops for public officials, staff and communities. Managed client relations and public consensus building. Assistant managed regional land use-transportation plans. Designed and modeled GIS-based transportation, land and redevelopment scenarios. Wrote GIS analyses & reports.

## skills

**LANGUAGES:** Proficient Spanish.

**SOFTWARE:** ArcGIS, Adobe Illustrator, InDesign, PhotoShop, Sketchup, AutoCAD, MS Suite, SPSS.

## activities

**MISSION COMMUNITY MARKET** | BOARD PRESIDENT | San Francisco, CA | 2013 - Present

**SAN FRANCISCO BICYCLE COALITION** | VOLUNTEER | San Francisco, CA | 2009 - 2013

**SAN FRANCISCO GREAT STREETS PROJECT** | VOLUNTEER PLANNER | CA | 2009 - 2010

**CITY OF BERKELEY** | LEED-ND ANALYST | Berkeley, CA | 2009 - 2010

**TERREBONNE READINESS AND ASSISTANCE COALITION** | VOLUNTEER | Houma, Louisiana | June 2006

## accreditations and memberships

**U.S. GREEN BUILDING COUNCIL** | LEED® ACCREDITED PROFESSIONAL

**SAN FRANCISCO PLANNING & URBAN RESEARCH ASSOCIATION (SPUR)** | MEMBER

**SAN FRANCISCO BICYCLE COALITION** | MEMBER

## honors

**ALMERE** | ALMERE HOUT DESIGN COMPETITION - WINNERS | March 2009

**URBAN LAND INSTITUTE** | URBAN DESIGN COMPETITION - HONORABLE MENTION | February 2005

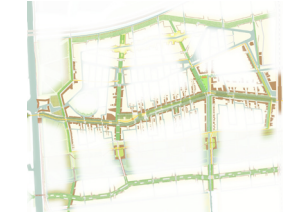
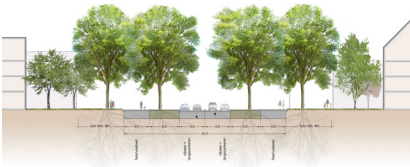
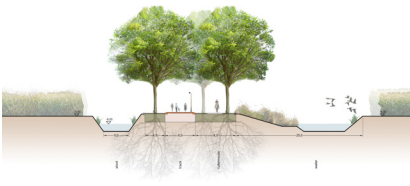
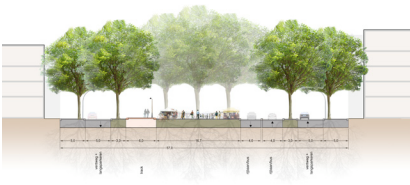
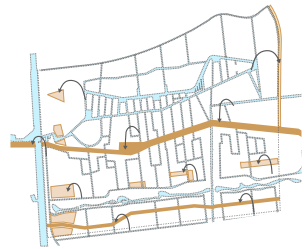
**MIT URBAN STUDIES & PLANNING** | GRADUATE STUDENT FELLOWSHIP AWARD | February 2005

references available upon request

# Almere Hout Noord

# WEST8

Almere, the Netherlands

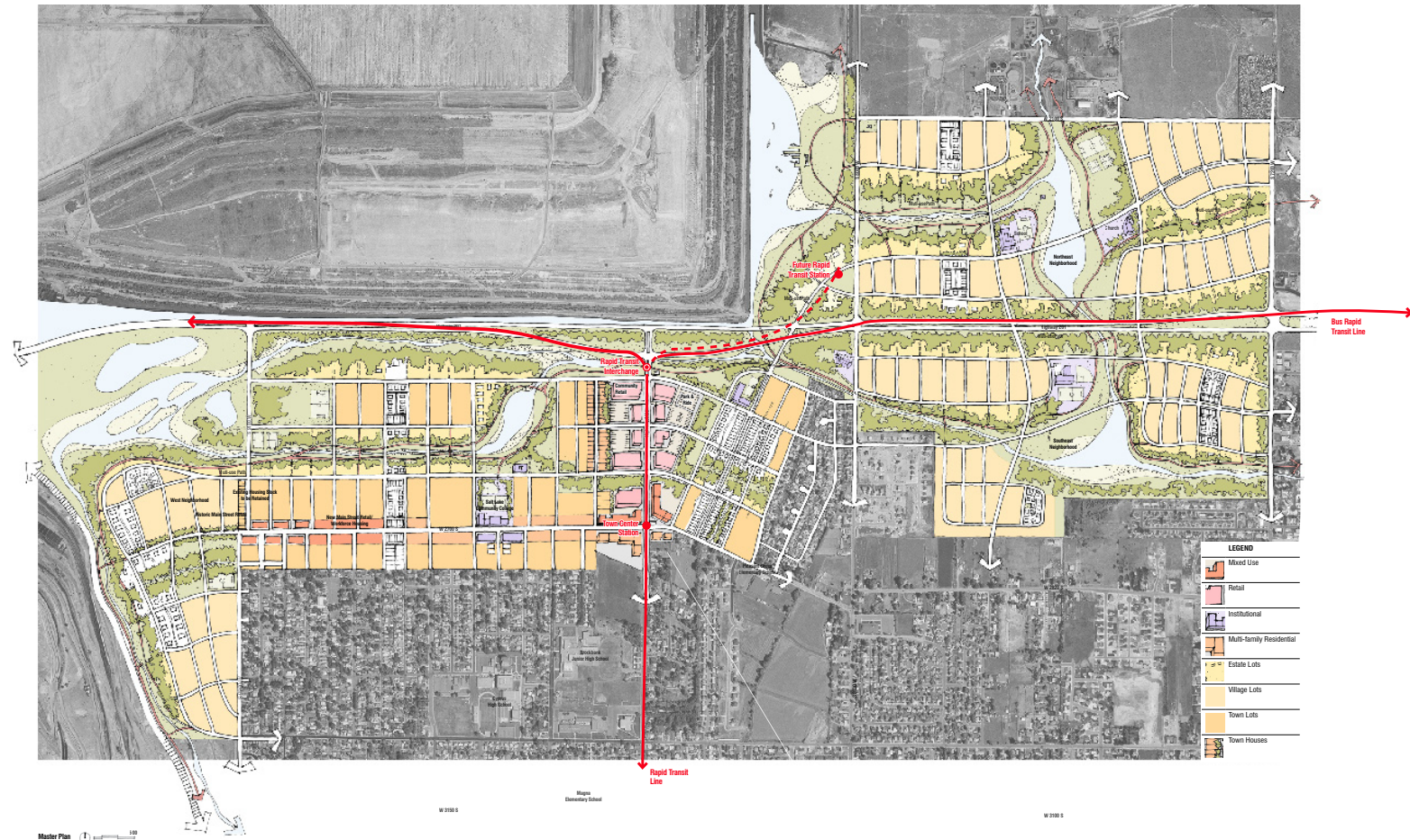
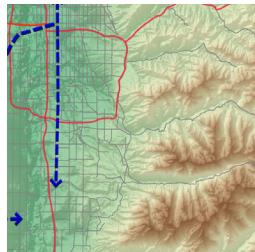
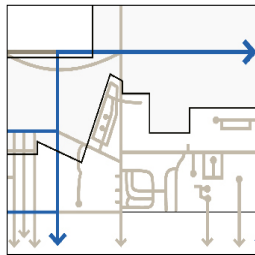
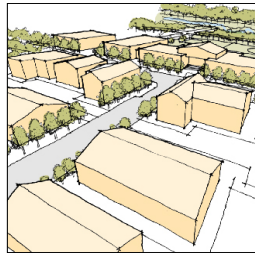


J E R E M Y S H A W



# ULI/Hines Student Design Competition

Magna, Utah



**Water-wise plants**  
Persist through droughts and reduce overall water consumption

**Infiltration Trenches**  
Complement swales and coarsely filter stormwater  
Integrate into streetside infrastructure and landscape

**Headwater streets**  
Mimic the natural drainage of small streams  
Reduce flood risk at its source

**Housing Diversity**  
Creates real housing choice as family needs change within and beyond Magna

**Natural Benches,**  
rock cascades and geo-synthetic ground cover reduce runoff and supplement swales during high rains

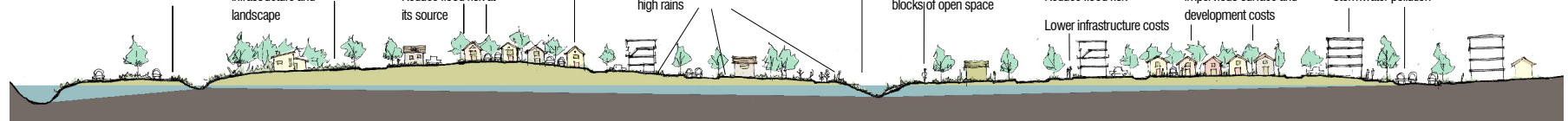
**Green Swales**  
collect nearby runoff and stormwater from smaller-scale swales.

**Green Paths** increase pedestrian and bike access, provide recreation and bring all households within 2 blocks of open space

**Vegetated Swale-Walks**  
form the armature of the natural drainage and pedestrian networks  
Reduce flood risk  
Lower infrastructure costs

**Green Courts**  
Allow easy parental supervision  
Reduce water use, impervious surface and development costs

**Rooftop and parking lot runoff**  
drain into the green network.  
Orchard parking lots with pervious surfaces reduce stormwater pollution



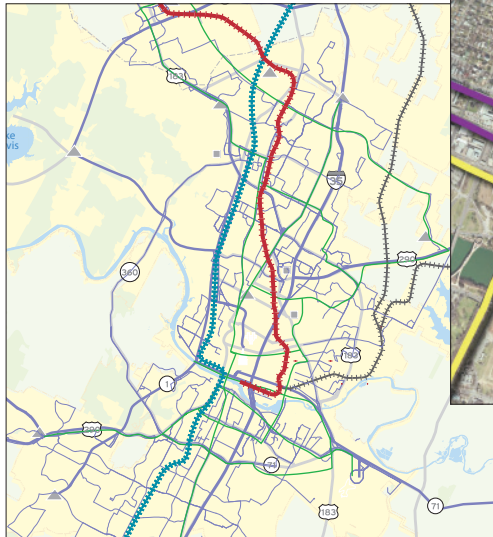
H O N O R A B L E M E N T I O N

J E R E M Y S H A W

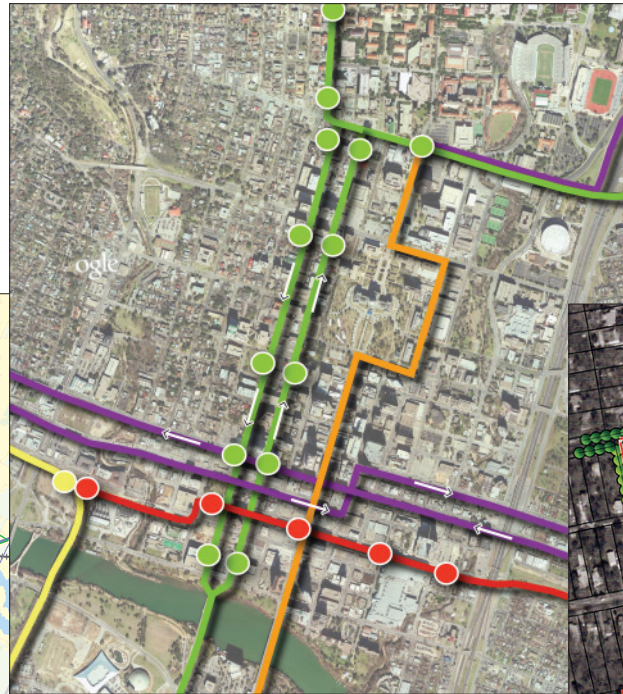


# Capital Metropolitan Transportation Authority

Austin, Texas



LONG-RANGE TRANSIT SYSTEM VISION



DOWNTOWN CIRCULATION

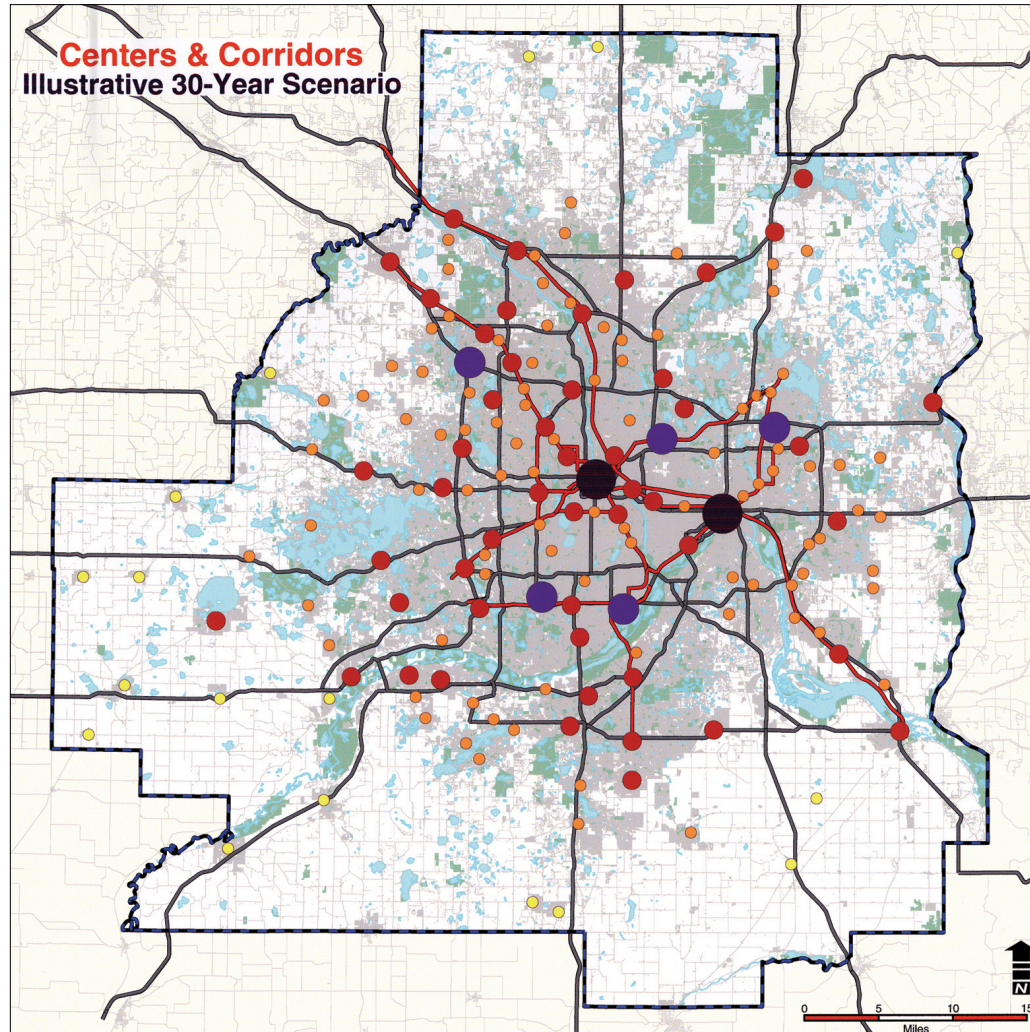


STATION-AREA PLANNING & DESIGN



# Smart Growth Twin Cities

Minneapolis-St. Paul Region, MN



**30-YEAR SCENARIO**  
centers&corridors | green | reinvestment

arcgis 8.3  
illustrator

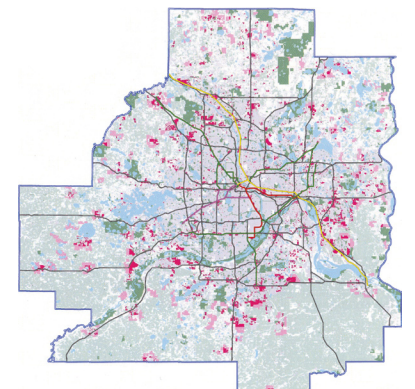
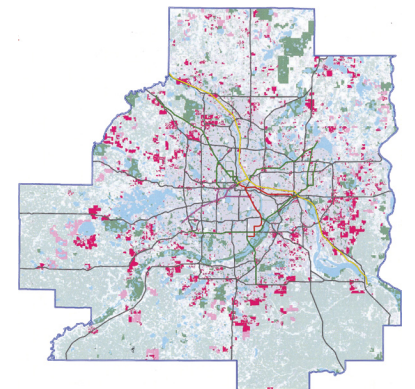
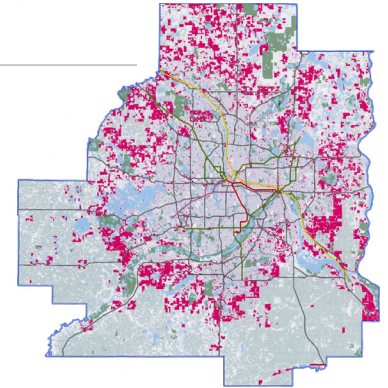
## DEVELOPMENT

land uses | scenarios

arcview 3.2

place3s

ms excel



## ANALYSIS

land use | transport | reinvestment

arcview 3.2

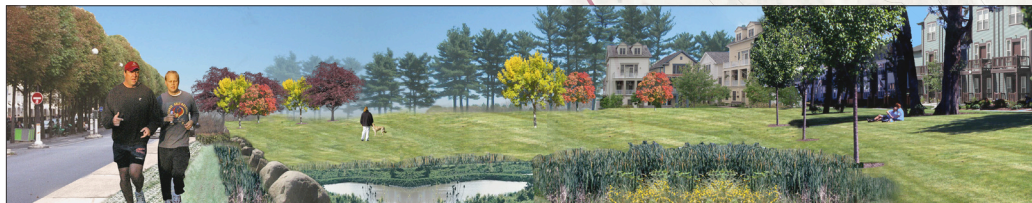
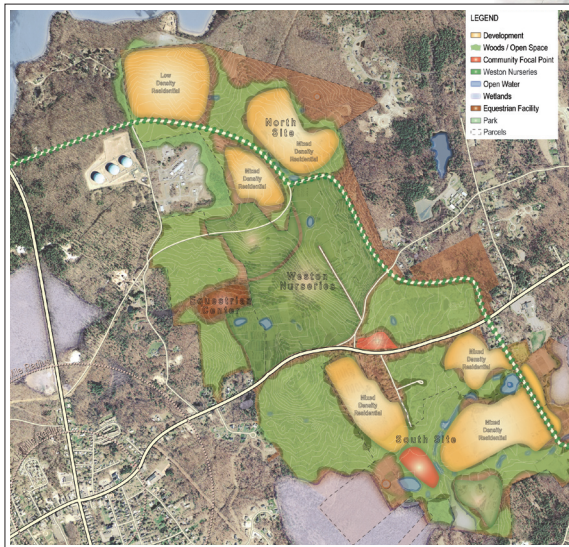
place3s

J E R E M Y S H A W



# Weston Villages

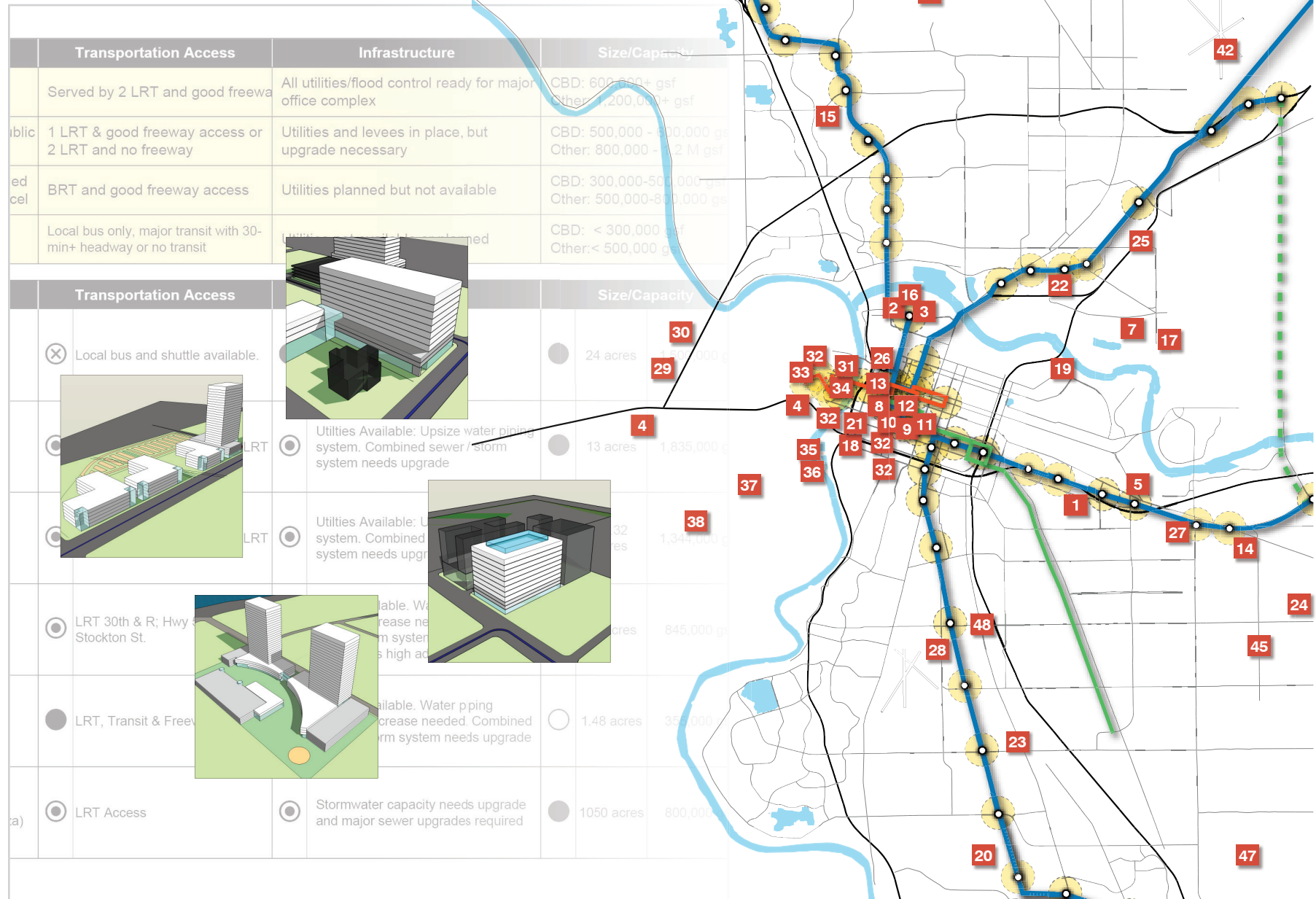
## Town of Hopkinton, Massachusetts





# HOK California State Office Planning

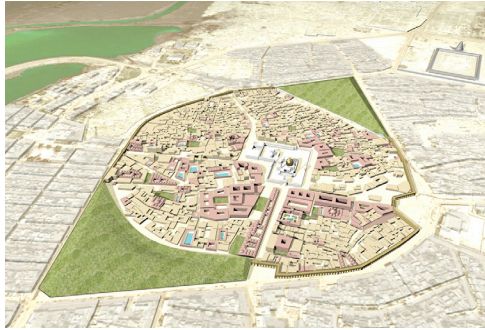
Sacramento, California



JEREMY SHAW

# Samarra Master Plan & Center City Design

Samarra, Iraq



Rebuilt Old City



Pilgrim Park



Bazaar Boulevard and Promenade



Wing Park

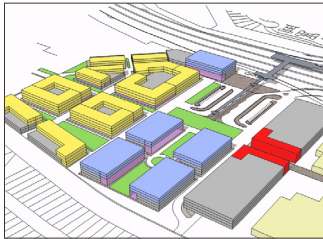
Wing Park section



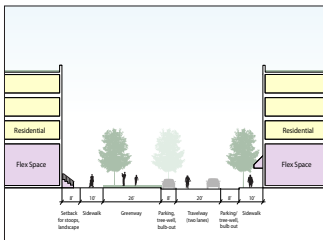
J E R E M Y   S H A W

# Pittsburg / Bay Point BART Redevelopment Study

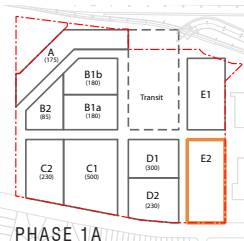
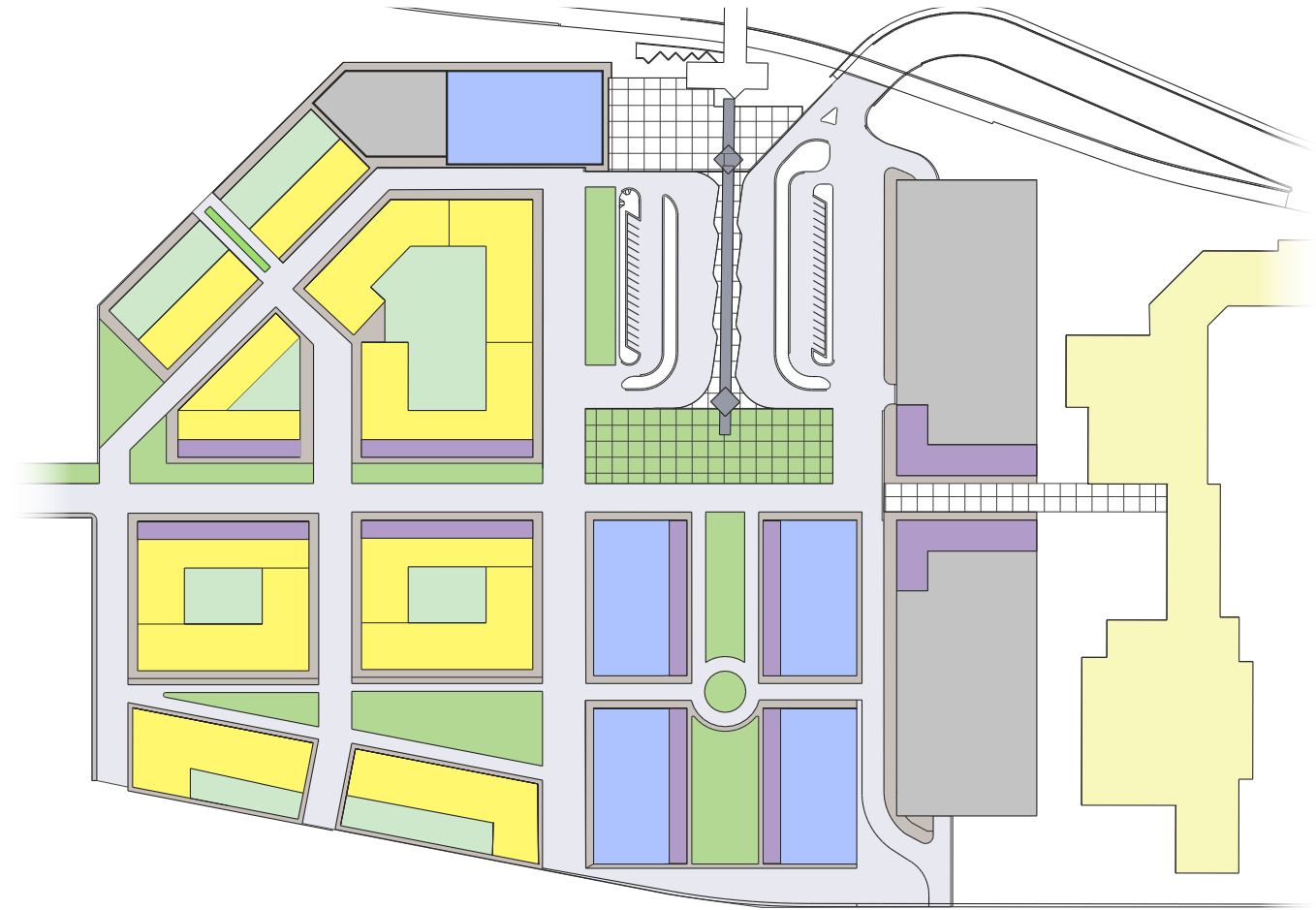
Pittsburg, California



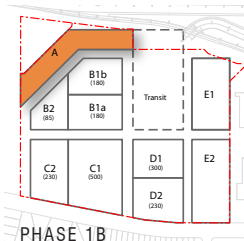
SOUTHEAST PERSPECTIVE



COLUMBIA CORRIDOR SECTION



PHASE 1A



PHASE 1B



PHASE 2A



PHASE 2B



PHASE 3



PHASE 4



# Urban Arterial Streets

DUSP MIT  
USA | Palo Alto | Los Angeles

They're Everywhere.



They Initiate.



They Grow.



They Structure.



They're Everywhere.



For one hundred years arterials have been designed as rural roads to maximize automobility & passive safety.

## How is arterial design innovating today?

Slowly



El Camino Real in Palo Alto

Locally



Santa Monica Boulevard in Los Angeles